

STELLA 1 X INSTALLATION INSTRUCTION



WARNING - RISK OF FIRE AND ELECTRICAL SHOCK. FIXTURE MUST BE INSTALLED BY A QUALIFIED ELECTRICIAN ONLY. FIXTURE IS INTENDED FOR INSTALLATION IN ACCORDANCE WITH THE NATIONAL ELECTRICAL CODE, LOCAL AND FEDERAL SPECIFICATIONS. DISCONNECT POWER AT ELECTRICAL PANEL BEFORE SERVICING. RETAIN THESE INSTRUCTIONS FOR MAINTENANCE REFERENCE.

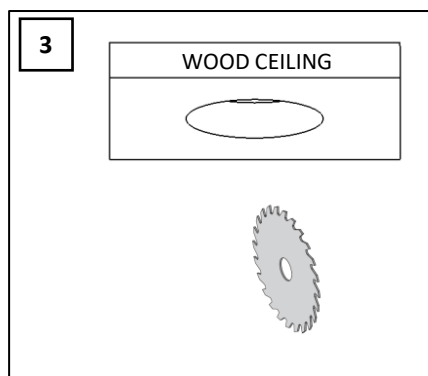
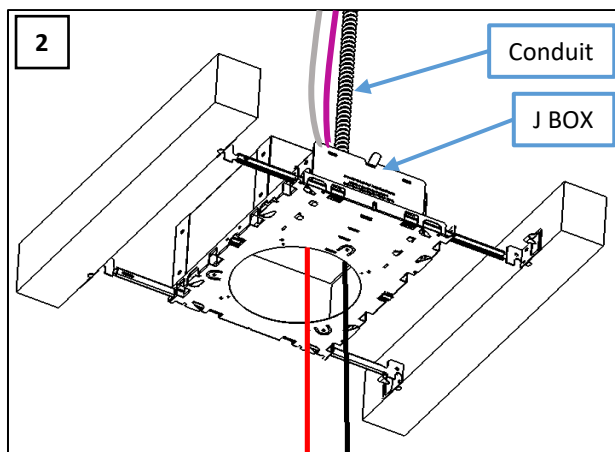
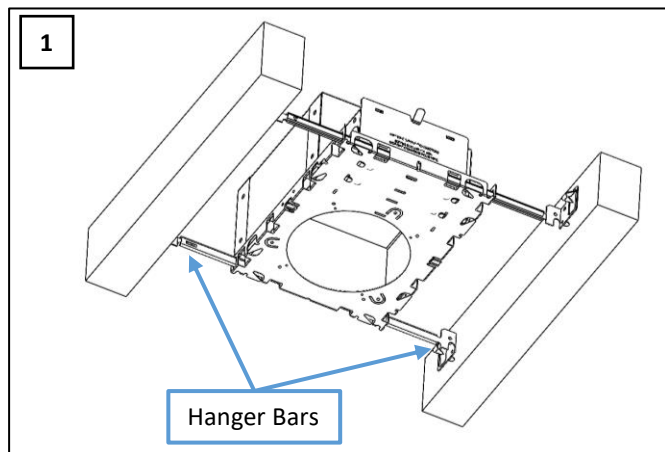
MATERIALS USED FOR CEILING FIXATION SHOULD CONFORM TO THE RELEVANT BUILDING REGULATIONS.

CUTOUT TABLE

| FIXTURE | CUTOUT |
|----------------------------------|---------------|
| STELLA 1 WOOD/STONE INSTALLATION | 1.8" DIAMETER |

NOTE: Ceiling thickness from 0 to 0.85" out of this range does not work

IC / NON-IC BOX INSTALLATION (NEW CONSTRUCTION)



NOTE:

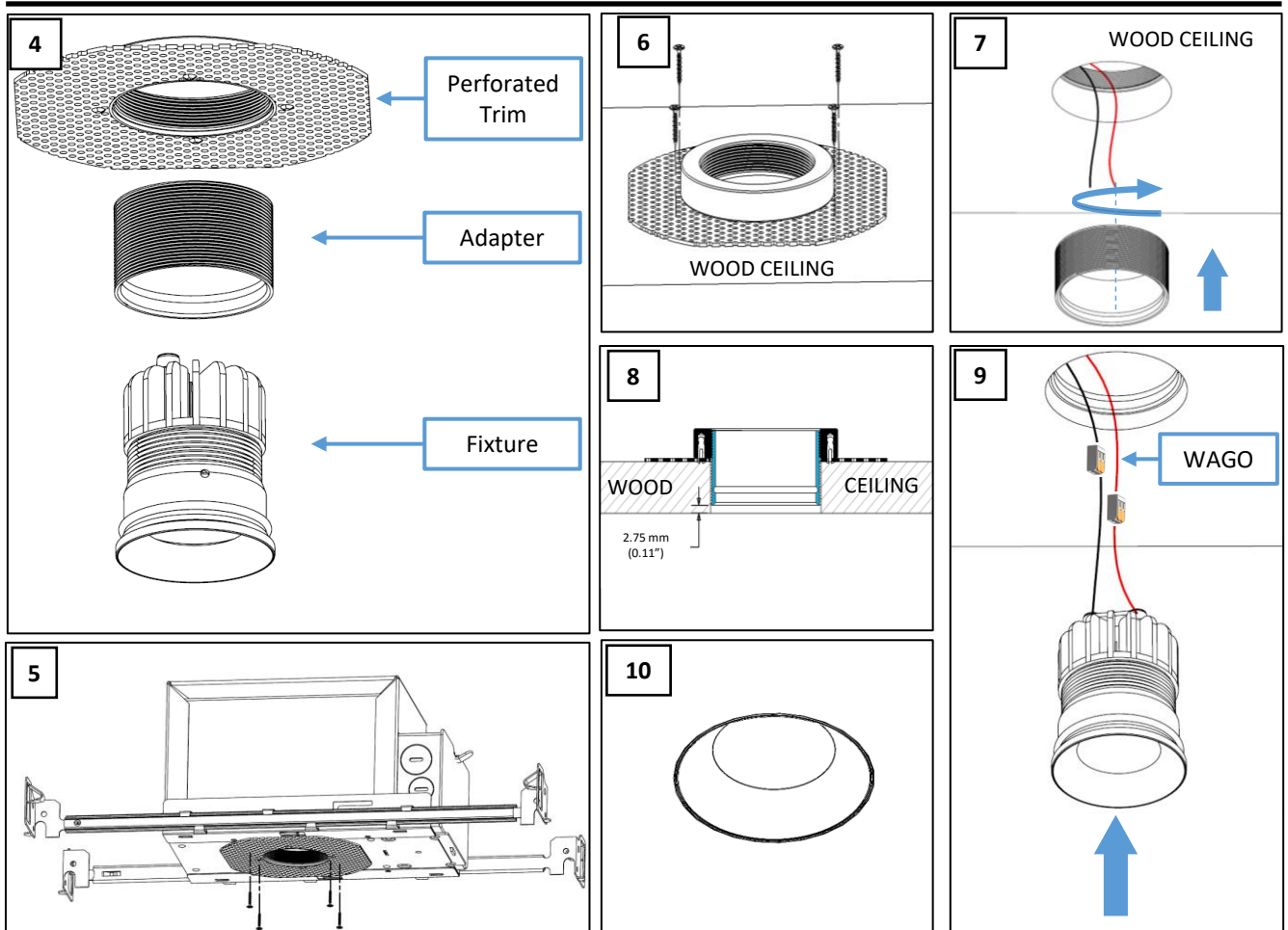
IN CASE OF CLASS 2 NON-IC BOX, USE MINI RETRO FIT / RETRO FIT BOX FOR THE DRIVER.

NOTE:

- IN CASE OF ELV, NON-DIM AND BLUETOOTH DRIVER, PURPLE & GRAY WIRES ARE ABSENT.
- RUNNING 0-10V DIMMING WIRES IN THE SAME CONDUIT AS LINE VOLTAGE IS NOT RECOMMENDED. THEY NEED TO BE RAN SEPARATELY OR AT LEAST SEPARATED BY A CONTINUOUS BARRIER.

1. INSTALL IC RATED BOX USING HANGER BARS ABOVE THE CEILING. (FIGURE 1).
2. KNOCK OUT A HOLE IN THE J BOX AND RUN THE CONDUIT THROUGH IT. PLACE THE DRIVER INSIDE THE J BOX AND CONNECT TO THE POWER LINES PULLED THROUGH THE CONDUIT. (FIGURE 2)
3. IF IT IS A 0-10V DRIVER, CONNECT THE WIRE (PURPLE AND GRAY) TO THE DIMMER MODULE. AND RUN THE LOW VOLTAGE WIRE (RED & BLACK) THROUGH THE IC BOX, OUT THROUGH THE OPENING BEFORE INSTALLING THE DRYWALL CEILING. (FIGURE 2)
4. CUT A HOLE IN THE WOODEN CEILING USING THE CUT-OUT TABLE AS A REFERENCE. CNC MILLING CUT IS STRONGLY ADVISED. (FIGURE 3)

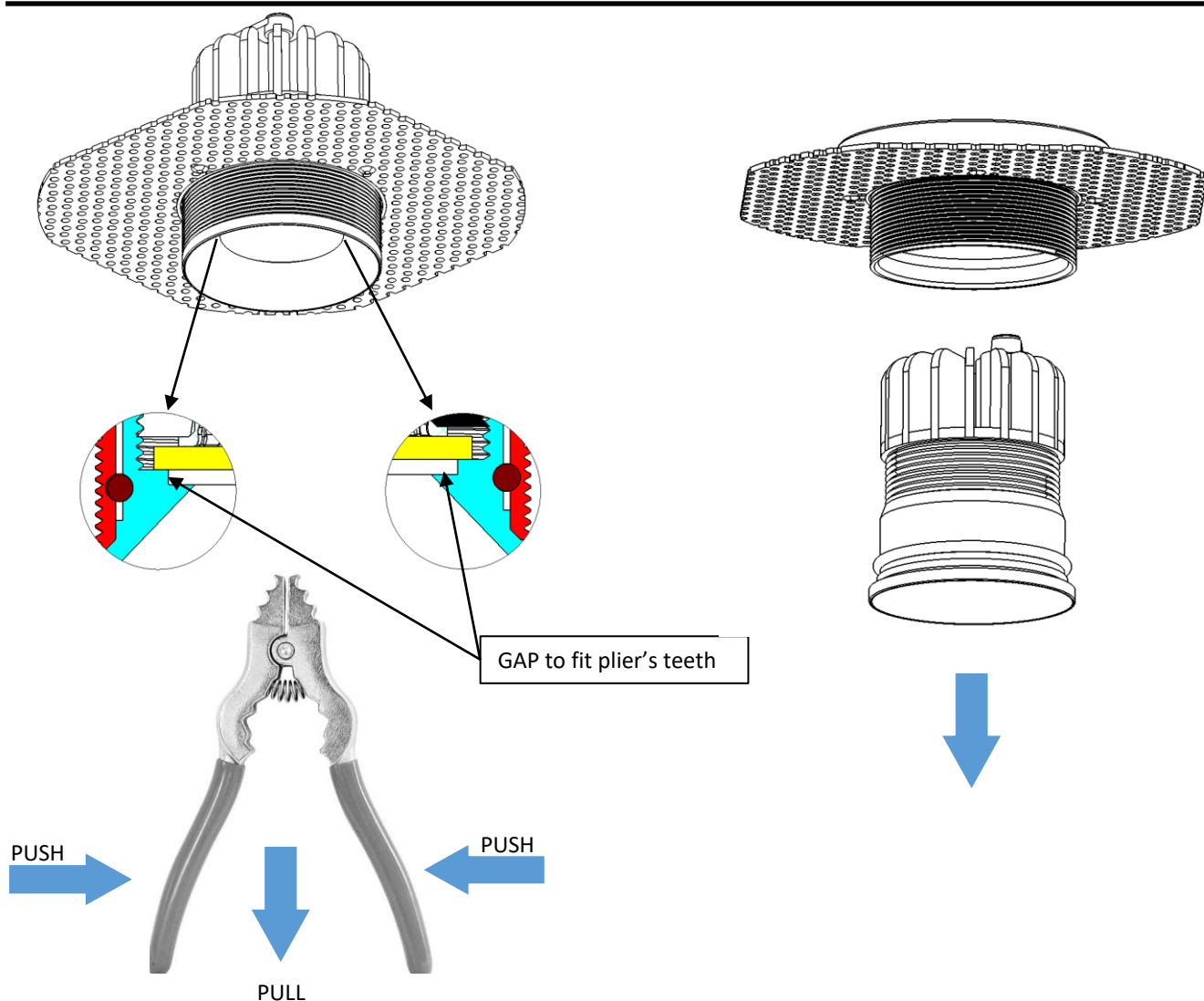
FIXTURE INSTALLATION



NOTE: Ceiling thickness from 0 to 0.85" out of this range does not work

1. INSERT PERFORATED TRIM FROM ABOVE CEILING, SECURE IT BY 4 X SCREWS IN THE IC BOX OPENING (FIGURE 5) OR THE WOODEN CEILING DEPENDING IF USING AN IC BOX. (FIGURE 6)
2. INSTALL WOOD CEILING, MAKE SURE THE OPENING OF THE ENCLOSURE BOX ALIGNS WITH THE CUT OUT HOLE IN THE CEILING. MAKE SURE THE LOW VOLTAGE LINES HANGS OUT SLIGHTLY FROM THE OPENING. (FIGURE 7)
3. SCREW THE ADAPTER TO THE PERFORATED TRIM AND ADJUST THE HEIGHT DEPENDING ON THE THICKNESS OF WOOD CEILING. FOR THE FIXTURE TO BE FLUSH WITH CEILING THE ADAPTER HAS TO BE 2.75 mm (0.11") ABOVE THE CEILING LEVEL (FIGURE 7 & 8)
4. CONNECT OUTPUT OF POWER SUPPLY TO THE FIXTURE USING PROVIDED WAGO CONNECTORS. RED TO RED, BLACK TO BLACK. PUSH THE FIXTURE IN THE ADAPTER, MAKE SURE ALL THE WIRES ARE UP IN THE CEILING (FIGURE 9)
5. TURN THE FIXTURE ON. (FIGURE 10)

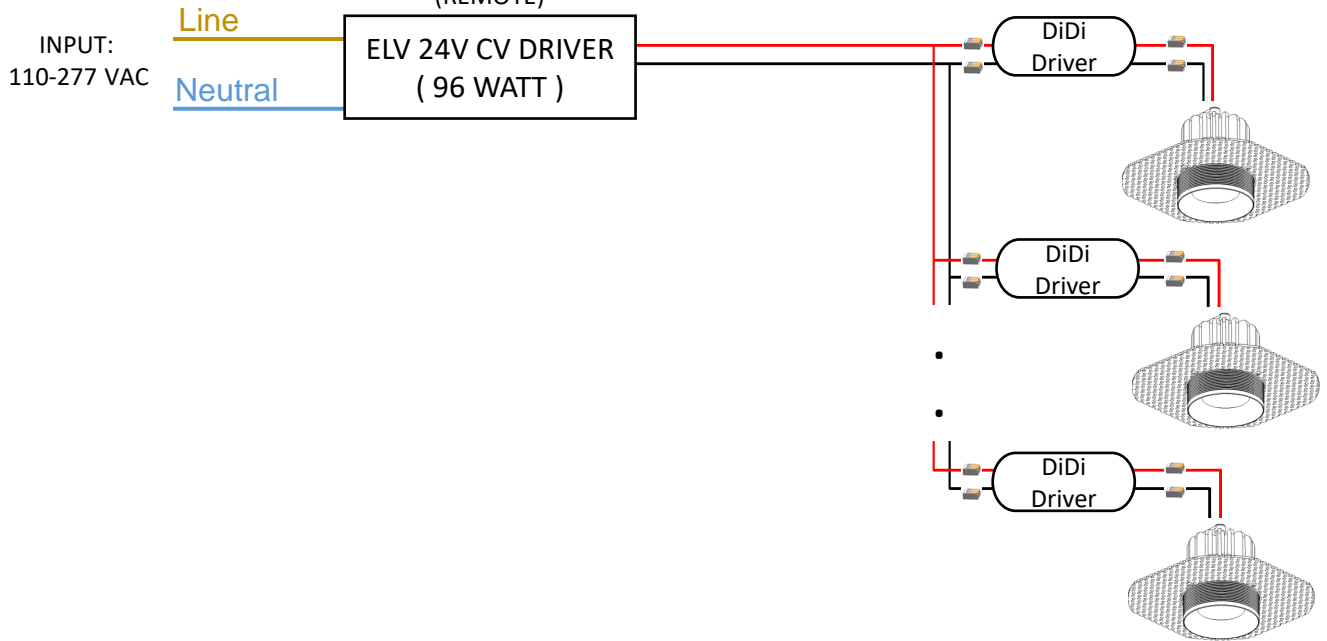
FIXTURE MAINTENANCE



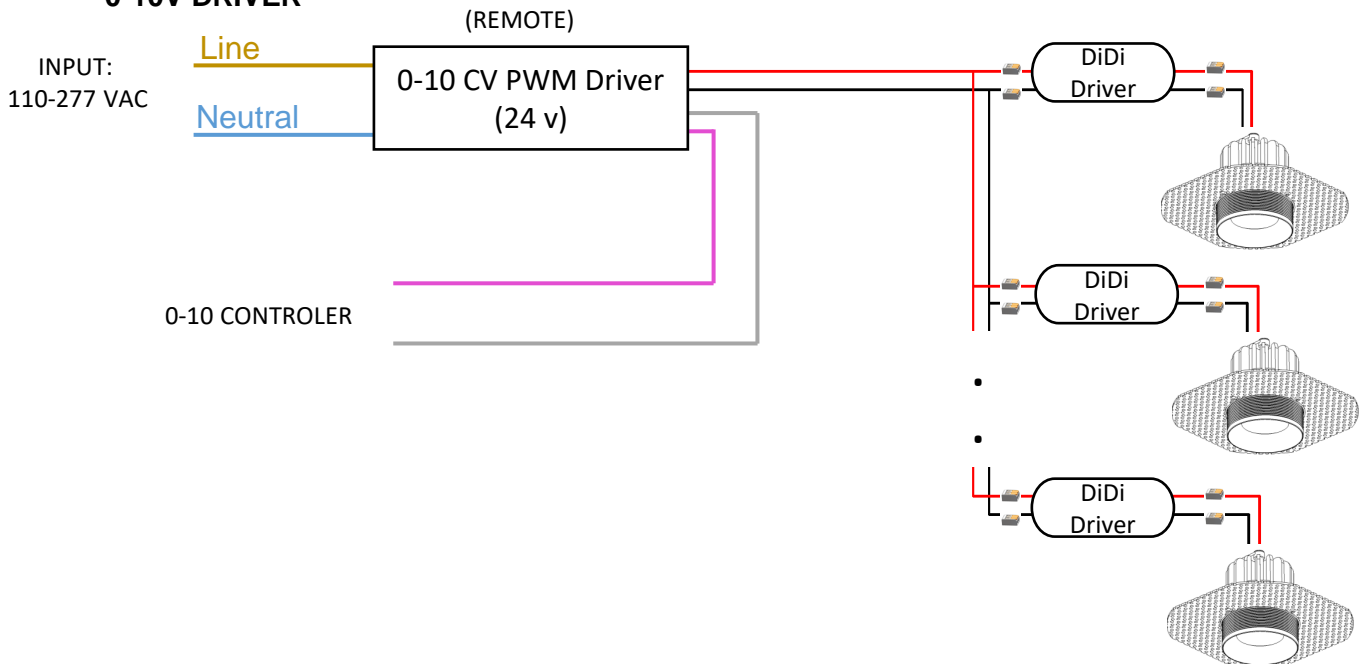
-
- SWITCH OFF THE POWER SUPPLY BEFORE CHANGING THE ACCESSORIES.
 - USE A REVERSE PLIER (CHAIN PLIER) TO PULL OUT THE FIXTURE FROM THE CEILING
 - ENGAGE THE TEETH OF PLIER IN THE GAP BETWEEN THE GLASS (YELLOW) AND THE BOTTOM RING (CYAN) AS SHOWN WITH ARROWS IN THE FIGURE
 - GET A GOOD GRIP PRESSURE AND PULL OUT THE FIXTURE.
 - DISCONNECT WAGO CONNECTORS, CHANGE THE ACCESSORIES, CONNECT THE WIRES BACK USING THE WAGO CONNECTORS, ROTATE THE SPRINGS VERTICALLY AND INSTALL THE FIXTURE BY PUSHING INTO THE RING INSTALLED ON THE CEILING

WIRING DIAGRAM – LOW VOLTAGE

• ELV, NON-DIM, BLUETOOTH DRIVER (REMOTE)



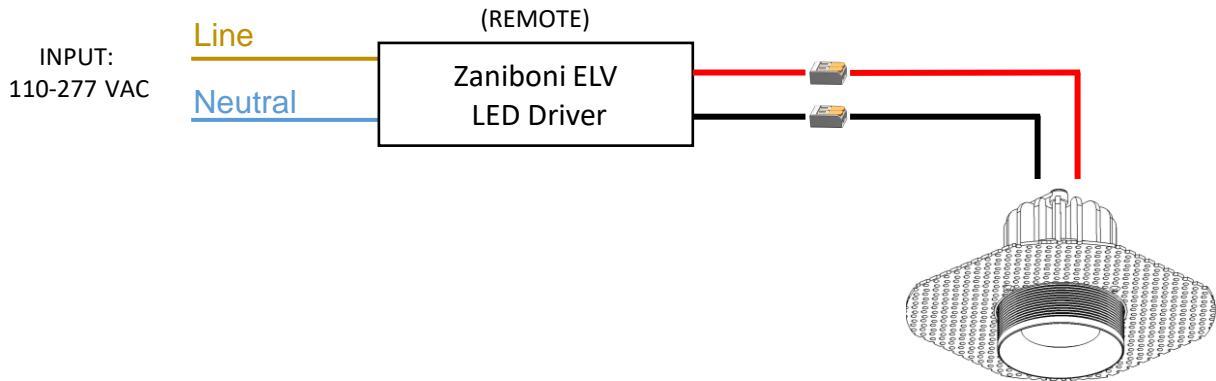
• 0-10V DRIVER



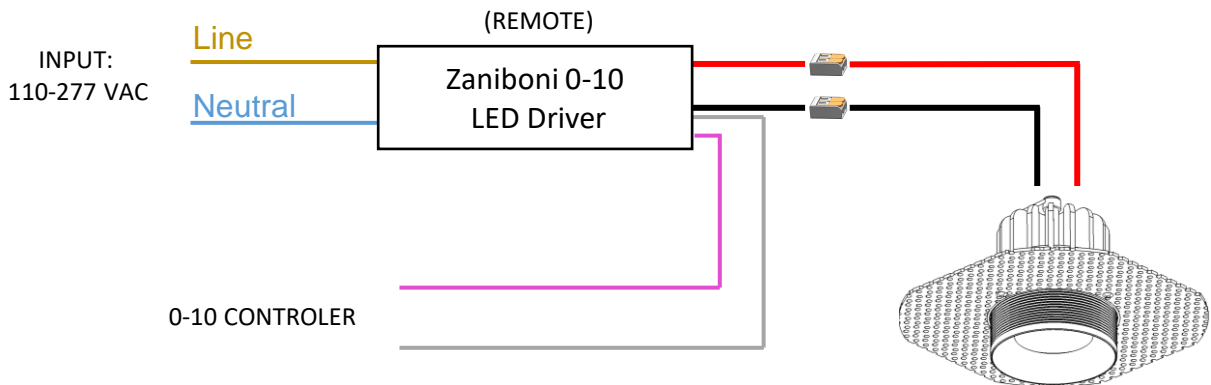
**The manufacturer reserves the right to change or modify the design, dimensions and specifications at anytime without notice. The manufacturer accepts no liability for consequential damage which is occasioned to the user base on the data provided.*

WIRING DIAGRAM – LINE VOLTAGE

- **ELV, NON-DIM, BLUETOOTH DRIVER**



- **0-10V DRIVER**



**The manufacturer reserves the right to change or modify the design, dimensions and specifications at anytime without notice. The manufacturer accepts no liability for consequential damage which is occasioned to the user base on the data provided.*